

JBACE



Comité consultatif pour l'environnement de la Baie James
James Bay Advisory Committee on the Environment
ᑲᑲᑲᑲᑲᑲ ᑲ ᑲᑲ ᑲᑲᑲᑲᑲᑲᑲᑲᑲᑲᑲᑲ ᑲᑲᑲᑲᑲ ᑲᑲᑲᑲᑲ ᑲᑲᑲᑲ ᑲᑲᑲᑲ ᑲᑲᑲ

ANNUAL REPORT 2013-2014



Photo on cover : Réal Lavigne

Graphic design : Mona Turner

English translation: Marilyn Thomson

**ANNUAL REPORT
2013 – 2014**

**JAMES BAY ADVISORY COMMITTEE
ON THE ENVIRONMENT**

ᐃ ᐱᐱᐱᐱᐱᐱ ᐱ ᐱᐱ ᐱᐱᐱᐱᐱᐱᐱᐱᐱᐱᐱᐱ
ᐱᐱᐱᐱᐱᐱ ᐱᐱᐱᐱᐱ ᐱᐱᐱᐱᐱ ᐱᐱᐱᐱ

This report is available on the website of the James Bay Committee on the Environment (JBACE). The site contains a wealth of information on the JBACE, including its mandate and activities, in three languages.

www.ccebj-jbace.ca



451-6336 47 10 95
Comité régional de l'environnement de la Baie-James
James Bay Advisory Committee on the Environment

Welcome

Who we are | About us | Publications | Organization | Links | Projects | Contact us | Français

Supporting and enhancing the environmental and social protection regime of the James Bay territory

Who We Are

The James Bay and Northern Québec Agreement (1975) established an environmental and social protection regime for the James Bay territory (territoire). The role of the JBACE is to oversee the administration of the regime. The latter provides for the review of laws and regulations to make sure they do not affect the rights guaranteed to the Crees, as well as for an environmental and social impact assessment and review procedure to minimize the negative impact of development.

The JBACE is currently working towards modernizing the impact assessment and review procedure in the light of social and technological changes and public participation standards. In addition, it has put forward a proposal for addressing major environmental and social issues relating to northern development.

In The News

Inquiry Mandate on Effects of Uranium Development

Joint BAFÉ-JBACE Commission:
See summary of [Information Document](#) prepared for MOCEP and MBM.
The views expressed in the document do not necessarily reflect those of MOCEP or MBM (full document available soon).

Workshop on Knowledge Acquisition and Dissemination
Abitibi, March 22 & 23, 2014
See the [Program](#) and [Discussion Paper](#).
Access the [abstract](#).


Copies of this report are also available from the Secretariat:

JBACE

383, rue Saint-Jacques, bureau C-220

Montréal (Québec) H2Y 1N9

 (514) 286-4400

 (514) 284-0039

Legal deposit
Bibliothèque nationale du Québec
National Library of Canada
ISBN
ISSN

TABLE OF CONTENTS

Letter to the Environment Ministers and the Grand Chief	i
MESSAGE FROM THE CHAIRMAN	ii
TERRITORY COVERED BY THE ENVIRONMENTAL AND SOCIAL PROTECTION REGIME (Section 22)	iii
INTRODUCTION	1
1. CONSIDERATION OF THE CREES' ACTIVITIES BY THE MINING SECTOR	2
a) Mineral exploration in the assessment and review procedure	2
b) Revision of the Mining Act	3
2. FOLLOW-UP ON IMPLEMENTATION OF THE FISHERIES ACT	5
3. TOWARD A BETTER UNDERSTANDING OF THE TERRITORY, ITS INHABITANTS AND ISSUES RELATED TO RESOURCE DEVELOPMENT AND ENVIRONMENTAL CONSERVATION	6
a) Review of literature on the Crees' environmental and social concerns	6
b) Workshop on acquisition of environmental and social knowledge	6
CONCLUSION	9
APPENDIX 1 – COMPOSITION AND MEETINGS OF THE JBACE	10
1.1 COMPOSITION OF THE JBACE	11
1.2 COMPOSITION OF THE SUBCOMMITTEES	11
1.2.1 <i>Administrative Committee</i>	11
1.2.2 <i>Subcommittee on Mineral Exploration</i>	11
1.2.3 <i>Subcommittee on Public Participation</i>	11
1.3 SECRETARIAT	11
1.4 JBACE MEETINGS	11
APPENDIX 2 - STATEMENT OF FINANCIAL ACTIVITIES FOR THE YEAR ENDED MARCH 31, 2014	12
APPENDIX 3 - COMPOSITION AND MEETINGS OF THE EVALUATING COMMITTEE (COMEV), THE PROVINCIAL REVIEW COMMITTEE (COMEX) AND THE FEDERAL REVIEW PANEL (COFEX-SOUTH)	13
APPENDIX 4 - PROJECTS SUBMITTED TO THE EVALUATING COMMITTEE (COMEV) AND THE PROVINCIAL REVIEW COMMITTEE (COMEX)	14

April 30, 2014

The Honourable Leona Aglukkaq
Minister of the Environment of Canada

The Honourable David Heurtel
Minister of Sustainable Development, the Environment
and the Fight Against Climate Change

Dr. Matthew Coon Come
Grand Chief
Grand Council of the Crees (Eeyou Istchee)

Ministers Aglukkaq and Heurtel:
Grand Chief Coon Come:

I am pleased to send you the activity report of the James Bay Advisory Committee on the Environment for the year ended March 31, 2014.

Yours truly,



Rodney Mark
Chairman (2013-2014)

MESSAGE FROM THE CHAIRMAN



Reconciling development with environmental protection and traditional Cree activities is central to the vision of the authors of the James Bay and Northern Québec Agreement. During my mandate as Chief of the com-

munity of Wemindji, I worked on a territorial management initiative to reconcile mining with the creation of the large Paakumshumwaau-Matuskaau protected area.

My appointment as Chairman of the James Bay Advisory Committee on the Environment (JBACE), shortly after my election as Deputy Grand Chief of the Cree Nation, gave me another opportunity to work toward achieving that vision. The JBACE has proved to be a stimulating forum, enabling people from all horizons to discuss implementation of the principles underlying the environmental and social protection regime, notably with a view to reducing the impact of development on the Crees, the environment and wildlife, as well as protecting the hunting, fishing and trapping rights recognized by the Agreement.

The environmental and social protection regime also provides for Cree involvement in its implementation. In this regard, I am especially proud of the workshop held in Mistissini on the acquisition and dissemination of social and environmental knowledge, an event that many Crees took part in. They demonstrated their will to play an active role in research concerning their territory. It is now up to the JBACE, along with its partners, to identify how to follow up on the workshop.

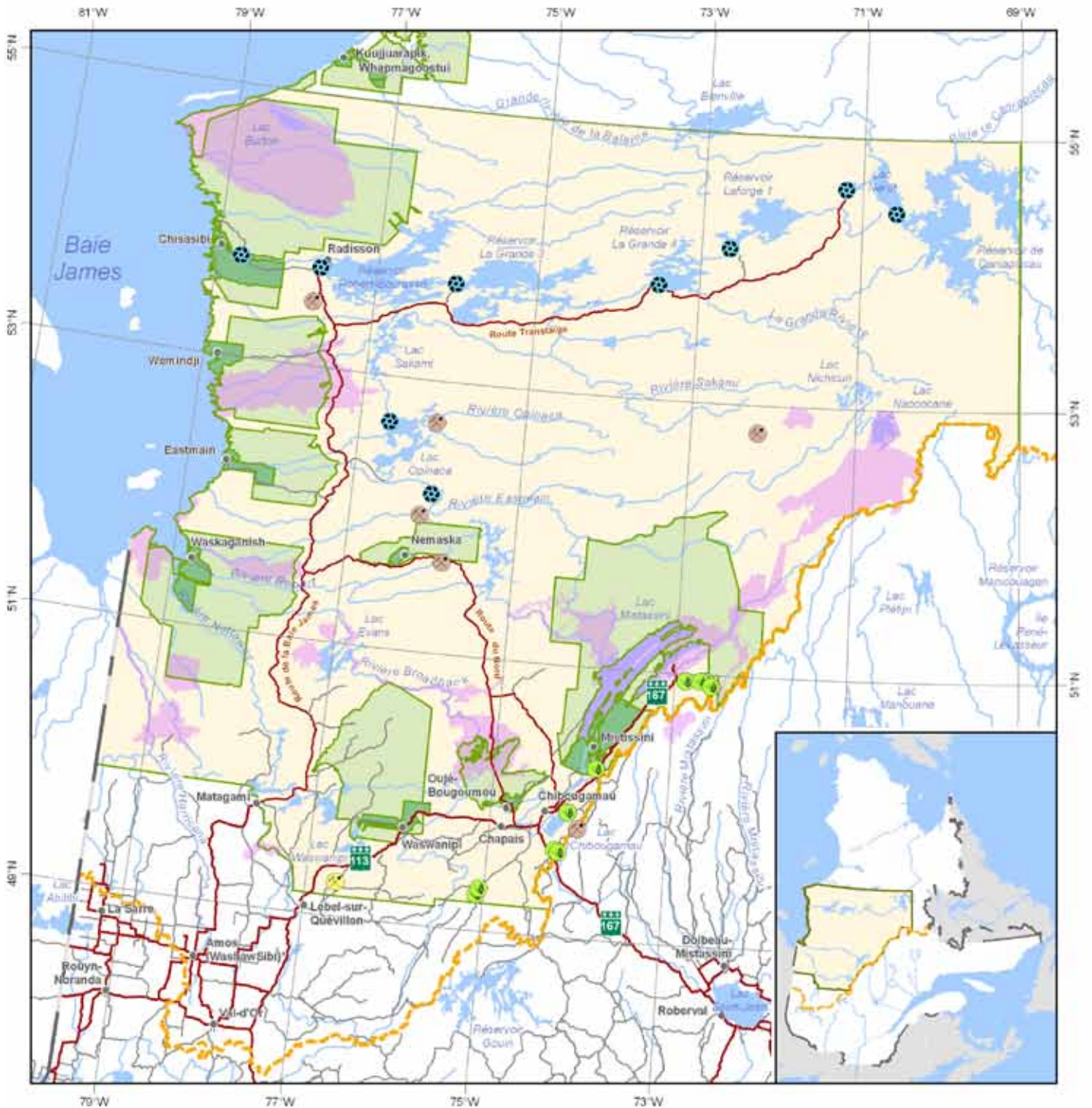
I would like to thank the JBACE members and staff for welcoming me and providing assistance throughout the year.

Rodney Mark
Chairman

A handwritten signature in blue ink, consisting of several loops and a long horizontal stroke at the end.

March 31, 2014

TERRITORY COVERED BY THE ENVIRONMENTAL AND SOCIAL PROTECTION REGIME (Section 22)



Limits

- Territory covered by the regime ¹
- Cree Category I lands
- Cree Category II lands
- Southern limit of JBNQA Territory
- Border

Infrastructures

- Mine
- Mine project
- Hydroelectric power station

Conservation areas

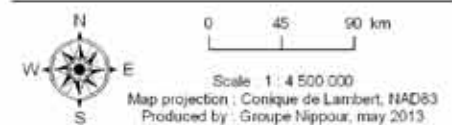
- Exceptional forest ecosystem
- Protected area

¹ The Crees do not recognize the southern limit of the regime as defined on this map.

* The Washaw Sibi Eeyou Association is temporarily based in Amos.

Sources

- Land division, mine site, MERN-Québec, 2014
- Exceptional forest ecosystem, MFFP-Québec, 2013
- Protected area, MDDLCC, 2014
- Hydroelectric infrastructures, CEHQ, 2014



INTRODUCTION

In creating a specific environmental and social protection regime, the signatories to the James Bay and Northern Québec Agreement (JBNQA – 1975) put in place a body with a mandate to review and oversee the administration and management of the regime established by Section 22 of the JBNQA. That body is the James Bay Advisory Committee on the Environment (JBACE). The Cree Nation Government and the governments of Québec and Canada appoint the members in equal numbers.

The JBACE undertakes its mandate as the preferential and official forum for the responsible governments concerning the adoption of policies, laws, regulations and land-use measures that have an impact on the physical and social environment of the James Bay Territory. The JBACE ensures that such measures comply with the Section 22 regime, notably with respect to the Crees' hunting, fishing and trapping rights recognized under the JBNQA.

The JBACE also oversees administration and management of the Section 22 regime. The regime seeks to reduce the undesirable effects of development on Aboriginal communities, wildlife resources and the environment. The Committee examines the environmental and social impact assessment and review procedure; as necessary it submits recommendations to the parties¹ to improve the procedure.

In 2013-2014, the Committee implemented its Strategic Plan 2013-2018. Access to information, transparency, public participation and knowledge of issues affecting the territory are principles that guided the Committee's activities throughout the year.

In 2013-2014, the JBACE paid special attention to implementation of the amendments to the federal government's Fisheries Act, as well as the Québec government's Bill 43 to amend the Mining Act. Among other things, the JBACE continued its analysis of the assessment and review procedure for environmental and social impacts of projects. In this regard, the JBACE made recommendations to the signatories concerning the handling of mineral exploration projects. It also continued its work on the public participation process.

1 The Gouvernement du Québec, the Government of Canada and the Cree Regional Authority.

1 Consideration of the Crees' activities by the mining sector

The JBACE carried out a number of activities to improve consideration of the Crees' rights when mining projects are carried out. Such an objective involves putting in place authorization procedures that are more transparent and more conducive to dialogue between the various users of the territory.

A) Mineral exploration in the assessment and review procedure

In 2008, the JBACE submitted to the parties concerned a proposal to revise the lists of projects subject to or exempt from the assessment and review procedure, as set out in Schedules 1 and 2 of Section 22. At the time, the JBACE had not studied mineral exploration projects because they required a more in-depth review. In 2012, a subcommittee began an analytical review of mineral exploration in order to establish criteria for the amendment of the project lists in a manner that thoroughly considers exploration activities.

The purpose of this work is to make the procedure more predictable for proponents of exploration projects and for the communities. The subcommittee took the existing regulatory framework into account while ensuring the participation of the Crees, as provided by Section 22.

In 2013, the JBACE held a workshop to discuss the subcommittee's preliminary recommendations with the members of the assessment and review committees. The workshop participants reached a consensus on most of the recommendations. Under existing regulations, most types of exploration projects may be exempted. In case of doubt, such projects should remain in the "grey zone" and not be included in either list.²

**PARTICIPANTS
AT THE
WORKSHOP
ON MINERAL
EXPLORATION
IN MAY 2013**



² Under Section 22, the Evaluating Committee (COMEV) must examine "grey zone" projects and recommend whether they should be subject to the review procedure. As necessary, COMEV formulates the directive for the assessment of environmental and social impacts.

The subcommittee, whose members are experts from this field, completed its review of deposit appraisal activities, access infrastructure associated with exploration, social impacts and cumulative impacts. In February 2014, the JBACE adopted the subcommittee's recommendations concerning mineral exploration. The recommendations will be set out in a [report](#) that will include a detailed analysis form for each exploration activity and other related works.

B) Revision of the Mining Act

In May 2013, the Québec government tabled Bill 43 to replace the Mining Act. The Bill proposed improvements that partially met the concerns raised by the JBACE during previous attempts to amend the Act (Bills 79 and 14 tabled in 2009 and 2011, respectively).

In September 2013, the JBACE submitted a [brief](#) as part of the special consultations of the parliamentary committee on Bill 43. In its brief, the Committee first recommended implementation of a mechanism to facilitate access to information on mining projects, whether they involve exploration or actual mining: the Committee believes that transmission of notices to the Crees and exchanges of information from the outset of mining-project planning will ensure better consideration of the Crees' rights and interests.³ For example, such an approach would avoid or mitigate the impacts of work carried out in certain areas during hunting periods.

To improve access to information, the JBACE also recommended that the public register of mining projects (GESTIM) become more user-friendly. In addition, GESTIM should be modified to include a detailed list of exploration and operation activities, along with schedules of planned work and reports filed.

The JBACE also recommended that the government clarify site-restoration obligations. Because a large number of sites contaminated by mining operations are still extant in the territory, the Committee suggested that restoration begin as soon as possible after a mine ceases operations, in other words when workers are still on site. As for exploration projects, the JBACE recommended that the application of site-cleanup provisions be improved.

³ The Agreement on Governance in the Eeyou Istchee James Bay Territory, signed in 2012, also provides measures to inform the Crees about mining projects.

Follow-up on studies and proposed restoration of the impact zone of the Opemiska tailings-dike failure

The JBACE continues to take an interest in studies and restoration carried out in the area affected by the tailings-dike failure at the former Opemiska mine. Despite the extensive studies carried out by the MRN and reviewed by Environment Canada and Fisheries and Oceans Canada, the JBACE reiterated the need for a presentation in the community of Waswanipi in response to concerns over water quality and fish habitat in the affected areas.

Proposed characterization of the Pointe Louis-XIV contaminated site

The JBACE proposed that characterization of the contaminated site at Pointe Louis-XIV be carried out after its meetings on December 16, 2013, with the Deputy Minister of the MDDEFP and the Associate Secretary General of the Secrétariat au développement nordique. The Committee proposed that the cost of the site characterization be covered by the Northern Development Fund. At this former radar site that was operated by National Defence Canada, hazardous materials have been partially removed, but its state continues to be of concern to the Crees who exercise their hunting and fishing rights on it.

The Québec government's decision to set this area aside for the Lac-Burton-Rivière-Roggan-et-la-Pointe-Louis-XIV protected area makes a full site clean-up even more relevant.

Bill 43 was not adopted. Nevertheless in December 2013 the National Assembly of Québec approved Bill 70, which includes several provisions of the previous bill, such as the Minister's undertaking to consult Aboriginal communities in a separate manner so as to ensure mining activities are compatible with the other uses of the territory. Other provisions of the Bill confirm the terms of the Agreement on Governance in the Eeyou Istchee James Bay Territory. They cover such matters as transmission of information by claim holders to the Cree Nation Government and the Cree Mineral Exploration Board.

Presentation on the new governance agreement

The JBACE requested a presentation on the Agreement on Governance in the Eeyou Istchee James Bay Territory to assess its impact on the regime under Section 22 of the JBNQA.

On October 15, 2013, Martin Demers of the Secrétariat aux affaires autochtones presented the agreement, which establishes a Regional Government consisting in equal parts of representatives of the Crees and Jamésiens, for category III lands;* this government replaces the Municipalité de Baie-James. In addition, the administration of category II lands has been given to the Cree Nation Government.

The JBACE conveyed its congratulations to the signatories of the agreement, which gives the Crees greater representation on the region's decision-making bodies.

* The JBNQA stipulates three categories of land:

- Category I: Land where management is carried out by the local Cree administration;
- Category II: Land where Crees have exclusive hunting, fishing and trapping rights;
- Category III: Public land where Crees have exclusive rights to harvest certain wildlife species.

2 Follow-up on implementation of the Fisheries Act

The Government of Canada has amended the Fisheries Act so as to strengthen protection of the productivity of commercial, recreational and Aboriginal fisheries. In the future, a project proponent will have to ensure that there will be no long-term impact on the habitat of fish that are part of or that support such a fishery. If the proponent is not sure, it must contact Fisheries and Oceans Canada to review possible avoidance, mitigation or offsetting measures and, if necessary, to obtain authorization to proceed.

The JBACE first wrote to the federal Minister of Fisheries and Oceans in May 2013 and asked him to hold a special consultation with the Crees because no consultation took place before the adoption of Bills C-38 and C-45, which amended the Fisheries Act. On the Minister's invitation, the JBACE held a meeting with Richard Nadeau, Regional Director General of the Québec Region of the Department of Fisheries and Oceans. According to Mr. Nadeau, the amendments to the Fisheries Act will have little impact on the Crees, given that their fishing rights are already protected by the JBNQA. Moreover, the Department will continue to consult Aboriginal communities before authorizing projects that may affect their rights.

According to the JBACE, small projects not requiring authorization may disrupt the Crees' fishing practices. The JBACE has created a subcommittee, in cooperation with Fisheries and Oceans Canada and the Hunting, Fishing and Trapping Coordinating Committee, to review the adaptations required during implementation of the Act to take into account the Crees' rights under Sections 22 and 24 of the JBNQA.

Special Cree-Québec Task Force for Woodland Caribou

The JBACE Analyst is taking part in the work of a Special Task Force that is to propose an action plan for woodland caribou recovery in the territory covered by Chapter 3 of the Peace of the Braves (James Bay). The Special Task Force is considering demarcation of areas that contain critical woodland caribou habitat. These initiatives are based on a precautionary approach and are intended to define and protect critical habitat over the short term. In parallel, the Special Committee is working on the draft of a detailed action plan for the species' long-term recovery.

3 **Toward a better understanding of the territory, its inhabitants and issues related to resource development and environmental conservation**

In 2013-2014, the JBACE continued to implement its Strategic Plan for 2013-2018.⁴ As stated in the Strategic Plan, access to information, transparency, public participation and knowledge of issues affecting the territory usually improve decision making. This year the Committee wanted to gain a better understanding of the Cree communities' perspective on environmental and social matters and to promote development of a coordinated, long-term program to acquire environmental and social knowledge. To that end, the JBACE carried out a literature review of studies on the Crees' concerns and held a workshop on acquisition and dissemination of environmental and social knowledge.

A) Review of literature on Crees' environmental and social concerns

Meeting with the Deputy Minister of Sustainable Development, Environment, Wildlife and Parks

On December 16, 2013, the Committee members met Deputy Minister Clément D'Astous to present issues of common interest to the JBACE and the MDDEFP. The members reiterated their proposal for a strategic environmental assessment (SEA) of northern development to identify environmental and social issues upstream from the procedure. The members also reiterated the need to accelerate ecological planning so that Québec can meet its conservation objectives for northern environments.

Implementation of the environmental and social protection regime involves defining the issues associated with development in a northern environment. As part of its strategic planning, the JBACE undertook to ascertain the Cree communities' perspectives on environmental and social matters.

The Committee commissioned a review of literature on the Crees' environmental and social concerns in connection with recent studies on impacts and project monitoring, as well as research conducted by bodies in the territory or by universities. A review of this report will enable the members to determine whether the documentation on the Crees' environmental and social concerns presents shortcomings that need to be addressed.

B) Workshop on acquisition of environmental and social knowledge

Access to high-quality, objective information on northern environments is a targeted area in the action plan to implement the Strategic Plan 2013-2018. The James Bay communities require environmental and social data to participate fully in debates leading to decisions affecting their territory. Researchers conduct numerous studies in the James Bay Territory but very few of them are known to the Cree communities.

⁴ See the **Strategic Plan 2013-2018**.



VISIT TO A TRADITIONAL CREE CAMP IN MISTISSINI FOLLOWING WORKSHOP ON ACQUISITION AND DISSEMINATION OF ENVIRONMENTAL AND SOCIAL KNOWLEDGE

To discuss implementation of a coordinated program to acquire knowledge, the JBACE organized a two-day workshop in Mistissini, with bodies from the territory and research centres active in the territory. The purpose of the workshop was to initiate a discussion leading to improved dissemination of research findings in the Cree communities. It also had the secondary objective of strengthening Cree participation in research carried out in the territory and at the same time developing local competencies in this area.

Improvement of public participation

The JBACE is continuing its work to improve public participation in the assessment and review procedure. Using the Matoush uranium exploration project as a case study, the JBACE Analyst interviewed resource persons to obtain their comments on various aspects of the consultations held in the context of the environmental assessment of the project, including any adaptations carried out to facilitate the said consultations.

The JBACE's objective is to develop and submit recommendations to the parties concerned by Section 22.

The workshop was a remarkable forum for discussion between researchers and representatives of bodies in the territory and the Crees. It also gave some researchers the opportunity to present their work. All participants acknowledged the need to strengthen the connections between research centres and



WORKSHOP IN MISTISSINI ON ACQUISITION OF ENVIRONMENTAL AND SOCIAL KNOWLEDGE

the communities in the territory. This goal involves, among other things, identifying an interface to direct researchers to the study of issues specific to each community.

Of the many avenues identified during the workshop, the participants proposed the creation of a public portal, or “knowledge web,” to present research completed or in progress in the territory. The Cree participants pointed out the confidential nature of some information, particularly preferential hunting and fishing sites. Dissemination of research findings must respect this constraint.

In the year to come, the JBACE will determine a means of following up on the workshop, in cooperation with its partners, as the case may be.

Presentation on the new forest regime

On October 15, 2013, Simon St-Georges of the Ministère des Ressources naturelles presented the implementation of Québec’s new forest regime in the James Bay Territory.*

According to Mr. St-Georges, the new regime will give the Crees a greater role in forest planning and will take their traditional activities into account more effectively. Implementation of the forest regime in the territory considers such matters as the new governance structures by reserving a role for the Regional Government as well as the Cree Nation Government.

* More specifically, this matter involves the territory covered by Chapter 3 of the Agreement Concerning a New Relationship Between Québec and the Crees.

CONCLUSION

Even though the environmental and social protection regime was put in place more than 35 years ago, its implementation continues to be a challenge. The JBACE must continue its awareness efforts in order to ensure it is consulted about proposed policies, laws and regulations that may affect the regime. Moreover, the Committee would like to improve the governments' follow-up on its recommendations.

Modernization of the environmental and social impact assessment and review procedure continues to be crucial. The JBACE is fine-tuning its recommendations on inclusion of mineral exploration in the lists of projects subject to or exempt from the procedure. Clear, up-to-date lists will help make the procedure more predictable and transparent, especially in light of the many exploration projects undertaken each year.

The Committee made a special effort to determine the needs of the inhabitants in the James Bay Territory. Its work on recommendations affecting public participation in project assessment and review is intended to facilitate community participation in project consultations. The JBACE also commissioned a literature review covering studies of the Crees' social and environmental concerns.

Lastly, like its partners in the territory, the Committee noted that a wealth of information about the James Bay Territory is produced each year, but that its inhabitants do not have ready access to it. The workshop held in Mistissini in March 2014 brought together important actors so as to identify obstacles to the dissemination of information. It was also a first step toward strengthening long-term relationships between researchers and communities so that research projects can be coordinated with the concerns of the communities in the territory.



APPENDIX 1

COMPOSITION AND MEETINGS OF THE JBACE

1.1 Composition of the JBACE

Members appointed by the Cree Nation Government (CNG):

Ashley Iserhoff,
Chairman (until June 2013)

Ginette Lajoie

Rodney Mark,
Chairman (since July 2013)

Chantal Otter Tétreault

Isaac Voyageur,
Vice-Chairman

Members appointed by the Gouvernement du Québec:

Guy Hétu,
ministère des Ressources naturelles

Jean-François Coulombe,
ministère de l'Éducation, du Loisir et du Sport (until November 2013)

Manon Cyr,
Ville de Chibougamau (since November 2013)

Jean-Pierre Laniel,
ministère du Développement durable, de l'Environnement, de la Faune et des Parcs
(since November 2013)

Réal Lavigne,
Ville de Lebel-sur-Quévillon (until June 2013)

Marie-Josée Lizotte,
ministère du Développement durable, de l'Environnement, de la Faune et des Parcs

Members appointed by the Government of Canada:

Line Choinière,
Fisheries and Oceans Canada (since September 2013)

Annie Déziel,
Canadian Environmental Assessment Agency (until July 2013)

Anne-Marie Gaudet,
Canadian Environmental Assessment Agency (since December 2013)

Maryse Lemire,
Fisheries and Oceans Canada (until May 2013)

Monique Lucie Sauriol,
Aboriginal Affairs and Northern Development Canada (since September 2013)

Jean Picard,
Environment Canada

1.2 Composition of the subcommittees

1.2.1 Administrative Committee

Jean-François Coulombe, Québec (until November 2013)
Marie-Josée Lizotte, Québec (since November 2013)
Chantal Otter Tétreault, CNG
Jean Picard, Canada
Marc Jetten, Executive Secretary

1.2.2 Subcommittee on Mineral Exploration

Simon St-Georges, Québec
Jean Picard, Canada
Ginette Lajoie, CNG
Graeme Morin, Analyst

Resource persons:

Mounir Brikci-Nigassa, Environment Canada
Roch Gaudreau, ministère des Ressources naturelles
Aurora Hernandez, CNG (until September 2013)
Youcef Larbi, Cree Mineral Exploration Board
Laurent Ouellet, ministère des Ressources naturelles
Jean-Pierre Panet, CNG (since January 2014)

1.2.3 Subcommittee on Public Participation

Annie Déziel, Canada (until July 2013)
Anne-Marie Gaudet (since January 2014)
Ginette Lajoie, CNG
Marie-Josée Lizotte, Québec
Graeme Morin, Analyst

1.3 Secretariat

Marc Jetten, Executive Secretary
Louise Bélanger, Secretariat Officer
Graeme Morin, Environmental Analyst

1.4 JBACE meetings

The Committee met six times in 2013-2014:

178 th meeting	Conference call, April 8, 2013;
179 th meeting	Conference call, June 26, 2013;
180 th meeting	E-mail, August 22, 2013;
181 st meeting	Val-d'Or, October 15, 2013;
182 nd meeting	Québec City, December 16, 2013;
183 rd meeting	Montréal, February 27 2014.

APPENDIX 2**STATEMENT OF FINANCIAL ACTIVITIES*
FOR THE YEAR ENDED MARCH 31, 2014**

(unaudited – see notice to reader)

REVENUS	
Subsidy paid to the JBACE	301,000
Evaluating Committee Secretariat (COMEV)	30 000
Total income	\$331,000
OPERATING EXPENDITURES	
Salaries, wages, benefits	152,421
Payroll tax adjustments	(10,594)
Telecommunications	5,237
Rent (office space)	29,786
Travel expenses	7,575
Translation	28,468
Photocopying	5,404
Messenger services, postage	874
Office supplies, furniture and computer equipment	3,597
Expert opinions, meeting expenses	1,334
Insurance	390
Dues, fees, memberships, conferences	585
Professional fees	1,311
Advisory expenses	97
Implementation of the Strategic Plan	56,422
Training	913
Internet site	1,005
Interest, bank charges	340
Amortization	1,517
Subtotal JBACE	286,682
Expenditures attributable to COMEV	30,000
Total operating expenditures	\$316,682
OTHER FINANCIAL ACTIVITY	
Interest income	\$1,320

*The Financial Statements and Notice to Reader, prepared by Ruel Giroux, Chartered Professional Accountants, are available on request.

APPENDIX 3

COMPOSITION AND MEETINGS OF THE EVALUATING COMMITTEE (COMEV), THE PROVINCIAL REVIEW COMMITTEE (COMEX) AND THE FEDERAL REVIEW PANEL (COFEX-SOUTH)

COMMITTEE	MEMBERS		MEETINGS		
	Appointed by:		Nº	Date	Place
COMEV	CNG	Philip Awashish Brian Craik	253	2013-05-01	Montréal
	Canada	Anne-Marie Gaudet Louis Breton	254	2013-07-04	Québec
	Québec	Daniel Berrouard Mireille Paul	255	2013-09-26	Chibougamau
	Executive Secretary	Marie-Michèle Tessier (until November 2013) Mélanie Chabot (since December 2013)	256	2013-11-15	Montréal
			257	2014-03-13	Montréal
COMEX	Appointed by:		Nº	Date	Place
	CNG	Philip Awashish Brian Craik	305	2013-04-11	Montréal
	Québec	Pierre Mercier (until December 2013) André Boisclair (since December 2013) Daniel Berrouard Robert Lemieux (until January 2014) Robert Joly (since February 2014)	306	2013-05-15	Montréal
			307	2013-06-12	Chibougamau
			308	2013-07-04 and 05	Québec
			309	2013-07-24	Montréal
			310	2013-09-04	Montréal
			311	2013-10-08	Montréal
			312	2013-11-05	Québec
			313	2013-12-03 and 04	Québec
			314	2013-12-11	Conference call
			315	2014-02-06	Montréal
	Executive Secretary	Marie-Michèle Tessier (until November 2013) Mélanie Chabot (since December 2013)	316	2014-03-13	Montréal
			317	2014-04-23	Montréal
	COFEX-South	Appointed by:		Nº	Date
CNG		Philip Awashish Kelly Leblanc	N/A		
Canada		Claude Langlois Judy Doré Vicki Da Silva-Casimiro			
Executive Secretary		Anne-Marie Gaudet			

PROJECTS SUBMITTED TO THE EVALUATING COMMITTEE (COMEV) AND THE PROVINCIAL REVIEW COMMITTEE (COMEX)*

PROJECT	PROPONENT	COMEV Recommendation	COMEX Recommendation
Mining and related projects			
Project to operate natural aggregate deposits	First Nation of Waskaganish	Directives for impact statement	
Operation of the iron-ore deposit at the Lac Doré geological complex	BlackRock Metals Inc.	Directives for impact statement	Authorize project
Operation of a quarry and three sandpits for the BlackRock mining project	BlackRock Metals Inc.	Attestation of exemption	
Flordin project	Mines Aurbec inc.	Attestation of exemption	
Boring and blasting training activities (Whabouchi site)	Nemaska Lithium Inc.	Attestation of exemption	
Operation of a spodumene deposit (Whabouchi site)	Nemaska Lithium Inc.	Directives for impact statement	In progress

* No projects were submitted to the Federal Review Panel (COFEX-South) in 2013-2014.

PROJECT	PROPONENT	COMEV Recommandation	COMEX Recommandation
Mining and related projects			
Project to restore the Mine Principale site	Ministère des Ressources naturelles	In progress	
Corner Bay mining exploration project: request to transfer the attestation of exemption	CBay Minerals inc.	In progress	
Restoration of the former Coniagas tailings site	Lithium One Inc.	In progress	

PROJECT	PROPONENT	COMEY Recommandation	COMEX Recommandation
Energy projects			
Power supply for the BlackRock mining project	Hydro-Québec	Directives for impact statement	Authorize project
Transportation and related projects			
Project to reconstruct the intersection of the Eastmain and Matagami-Radisson roads	Ministère des Transports du Québec (MTQ)	--	In progress
Project to develop a community docking area on the Rupert River in Waskaganish	Hydro-Québec	Attestation of exemption	
Project to relocate a bituminous concrete plant to Chibougamau	Sintra	In progress	
Launching ramp – Lake Waswanipi	Municipalité de Baie-James	In progress	

PROJECT	PROPONENT	COMEVI Recommandation	COMEX Recommandation
Miscellaneous projects			
Project to operate a quarry covering more than 3 hectares for the Chisasibi high ground	Société d'énergie de la Baie James (SEBJ)	-	Authorize project
Solid waste management project	Cree First Nation of Waswanipi	Directives for impact statement	
Development of recreation areas at Lac Jacques	Hydro-Québec	Attestation of exemption	
Operation of borrow pits for rehabilitation of Némiscau substation	Blais et Langlois inc.	Attestation of exemption	
Assinica National Park	Ministère du Développement durable, de l'Environnement, de la Faune et des Parcs	Directives for impact statement	
Increase in the water supply	Cree Nation of Eastmain	Directives for impact statement	Authorize project

